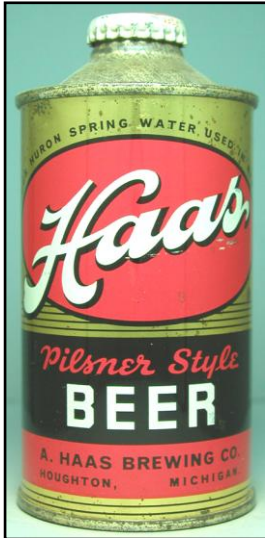


MICHIGAN “DID YOU KNOW” – A. HAAS HOUGHTON CONES
By Randy Karasek

This article shows the three examples of the A.Haas cone tops from Houghton, Michigan, mainly to show some of the side panel details not visible with the USBC.



USBC 168-08



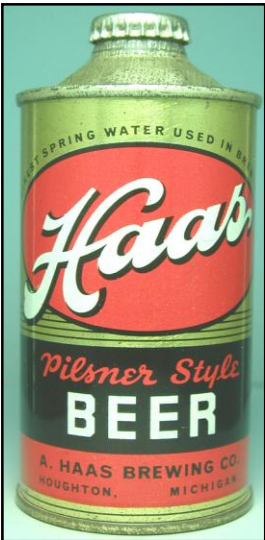
Left panel



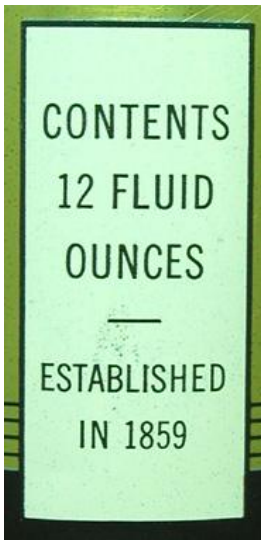
Right panel

USBC 168-08 is a low profile cone with the standard Cap-Sealed info mentioned on both side panels.

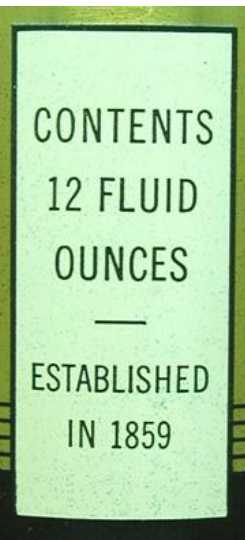
Note the “FAMOUS HURON SPRING WATER USED IN BREWING” above the Haas oval.



USBC 168-09



Left panel



Right panel

USBC 168-09 is a low profile cone, but the Cap-Sealed info is gone. In its place is simple ounces and 1859 dates, identical on both left and right panels.

Note the “FINEST SPRING WATER USED IN BREWING” above the Haas oval.

And finally we have USBC 168-10, a HP cone with an **IDENTICAL** design to the LP cone USBC 168-09. How can a squatter HP cone body share the exact design as a taller LP cone body? Look at the picture to the right. It really appears as if Haas simply used their LP sheets and cut them shorter to accommodate the taller HP cone spout! The HP is a tougher variation but looks more like poorly re-lidded LP cones!



USBC 168-10