

MICHIGAN “DID YOU KNOW” – A YELLOW CARDINAL? By Randy Karasek

Perhaps you have seen the red E&B brewery, Cardinal flat top (USBC 48-20), or even have an example in your collection (by the way there are four canning code variations).



CCC 5



CCC 72



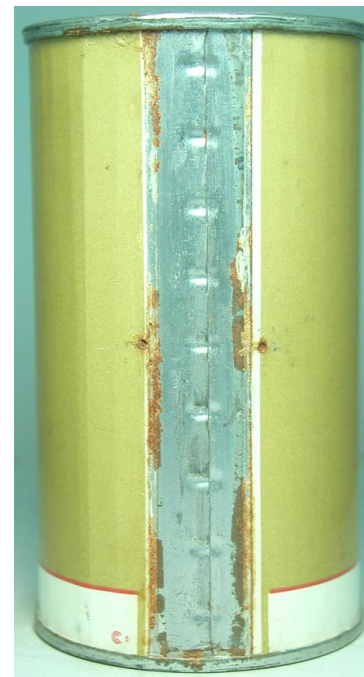
Keglined emblem



Keglined oval

Not a common can but not all that tough either, though it does seem that the CCC variations appear with more frequency than their Keglined counterparts.

However, have you ever seen the yellow Cardinal? This specific can was pictured in the BCU but wasn't able to be located for the USBC. Also, is it even a real can? Specifically, this is a “short sheet” flat which has been rolled around the body of another can.



Thanks to Dale Rogalski for locating this can and allowing me to photograph for the Michigan Beer Cans project, <http://www.mbcinfo.com>. This only known example now resides in the advanced collection of a Michigan specialist.