

MICHIGAN “DID YOU KNOW” – JUST ANOTHER ALTES TAB?
By Randy Karasek

If you happened to see the following Altes zip tab, would you stop to give it a second look, or just assume it another one of those dollar Michigan Altes pull tabs you see at nearly every other table of a Michigan show? If not, you had better take a closer look!

Super rare Altes zip tab – MBC 57-32



Notice the gold “Tastes Like Fassbier Draft Beer”, the long “A” in the Altes brand name, the solid red square with no outline.

If you hold the can in person the red square has gold horizontal thin lines running through it.

Also notice the silver zip top lid, wide notched seam, and older style

brewery mandatory of “BREWED AND PACKED AT THE BREWERY” and “© THE NATIONAL BREWING CO. OF MICH., DETROIT MICH.”

Common \$1.00 Altes pull tab – MBC 57-36.4



Notice the red “Tastes Like Fassbier Draft Beer”, the shorter “A” in Altes brand name, the solid red rectangle now has a gold border.

Gone are the cool gold horizontal lines running through the rectangle.

Also, we now have a gold pull top lid, narrow glued seam, and newer style

brewery mandatory of “© THE NATIONAL BREWING CO., DETROIT, MICH”.

Ok, minor differences, so what’s the big deal? Well, with the first example there are only two known indoor and one dumper. Not in the BCU, and was even on Fred Wolpe’s want list. For the second example, there are easily many 1,000’s of these available! Your call.

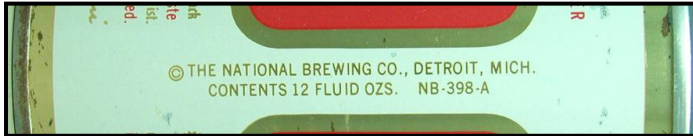
Multiple variations of MBC 57-36?

Did you notice the MBC 57-36.4 designation on the previous page? While that variation is indeed extremely common, there are a few similar design Altes pull tabs that are more difficult to obtain, and are sought after by Michigan collectors.



MBC 57-36.1

Older style mandatory, now has NB-398, still has silver lid.



MBC 57-36.2 & 57-36.3

Newer mandatory and now has NB-398-A. Some have a small red or black Altes logo printed on

top of a silver lid. MBC 57-36.2 is from the American Can Company; MBC 57-36.3 is from the Continental Can Company.

Where is the white 16oz Altes zip top?

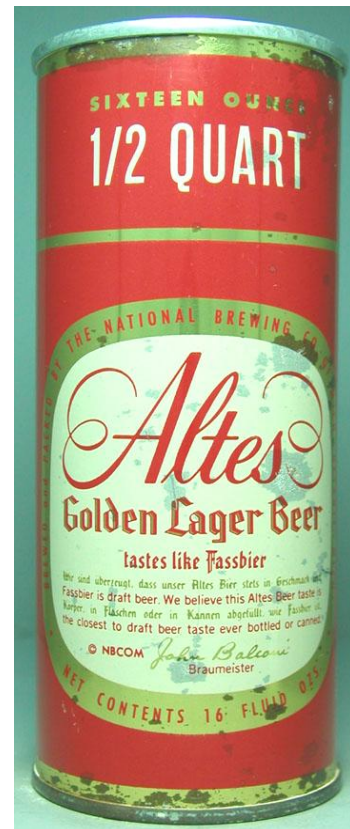
Good question! National put their older red design in both 12oz and 16oz zip, and Leon Hampton has dumped MBC 57-36.1 style in 16oz, but where is the “long A” white 16oz zip? Hopefully just a matter of time before this variation surfaces, if it even exists?

What about that red 16oz Altes zip top?

Did I mention that the 12oz white Altes zip is tough? Well throw in MBC 57-28, the red Altes 16oz zip, as another super tough example. When I started the MBC project I used a poorly created digital placeholder to represent this can, which first appeared in the black and white section of the Class book (CLASS 118-02).

Then I was able to photograph Chris Taylor’s dumper, of which supposedly at least two known. That was displayed with MBC content for nearly two years. But where was the Class book example? I asked many 16oz specialists but none had even seen the can, let alone had an example in their collection.

Fast forward to Blue/Gray 2005, where I was taking MBC pictures, as well as the tab top guys taking pictures for the new book. Saturday morning, and my camera equipment is already packed for flight home when Mark Crane finds me and mentions the red 16oz zip has appeared! The actual example from the Class book! Needless to say I pulled my camera equipment out of the rental trunk and quickly reset everything up for pictures of just this one special can!!!



MBC 57-28